

Ladder Safety Post

ROOF HATCH FALL PROTECTION

The Safety Post is designed to extend 42 inches above a landing platform to aid safe ladder access through a roof hatch. The spring assisted telescoping design mounts to the top two rungs of a fixed vertical ladder.



DETAILS

MATERIAL 1-1/2 inch by 1-1/2 inch by 1/8 inch high strength square tubing with a pull-up loop provided at the upper end to facilitate raising of post.

- Steel: yellow powder coat paint or hot dip galvanized
- Stainless Steel: Type 304, mill
- Aluminum: Mill

BALANCING SPRING Stainless steel constant force spring

HARDWARE Type 316 stainless steel

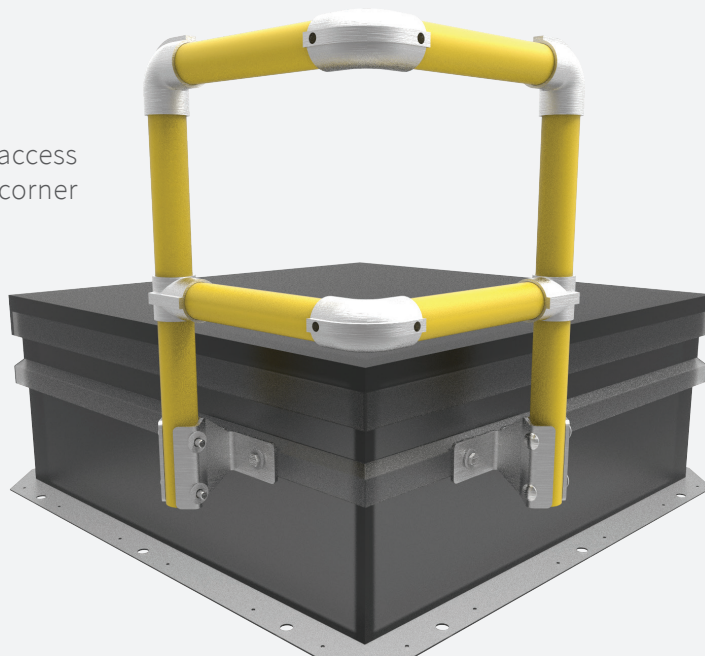
STANDARD MODELS

MODEL	MATERIAL	FINISH
BSPY	Steel	Powder Coat, Yellow
BSPG	Steel	Hot Dip Galvanized
BSPA	Aluminum	Mill
BSPS	Stainless Steel	Mill

Safety Grab Bar

ROOF HATCH FALL PROTECTION

The Safety Grab Bar is engineered to provide safe access through roof hatches. The grab bar mounts to a corner section through the curb counterflashing.



DETAILS

MATERIAL Rails and posts, aluminum, 1-1/4 inch ID (1.66 inch OD) Schedule 40 pipe

FITTINGS Cast aluminum alloy with set screw hold

MOUNTING BRACKETS 3/16 inch steel, zinc-plated with nut backing plate

HARDWARE Hex head bolts 3/8 inch - 16 by 3/4 inch zinc-plated steel

STANDARD MODELS

MODEL	MATERIAL	FINISH
BSGBAY	Aluminum	Powder Coat, Safety Yellow
BSGBA	Aluminum	Mill

Safety Yellow Powder Coat option shown